

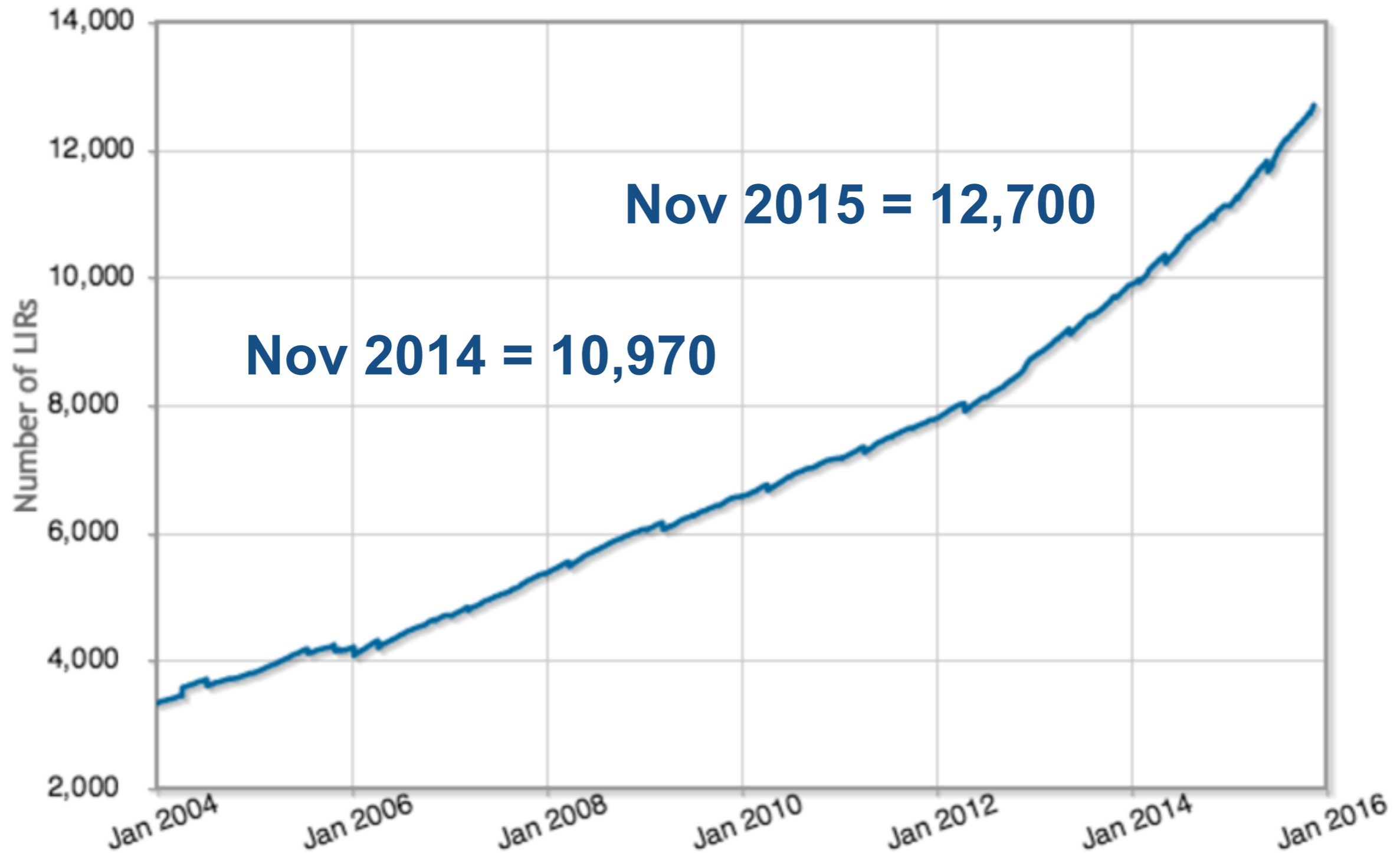


**RIPE NCC**  
RIPE NETWORK COORDINATION CENTRE

# RIPE NCC UPDATE

Ingrid Wijte | 04 December 2015 | AfriNIC23

# Membership Growth 2015

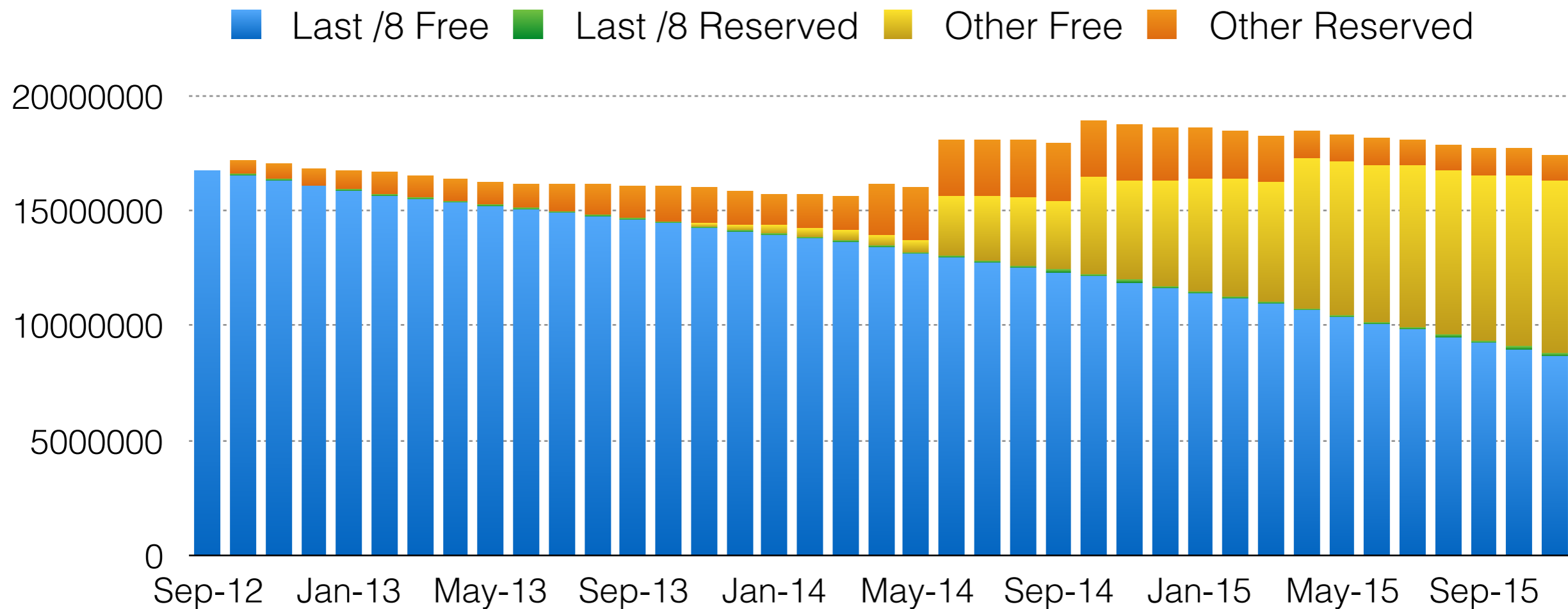


# The Last /8



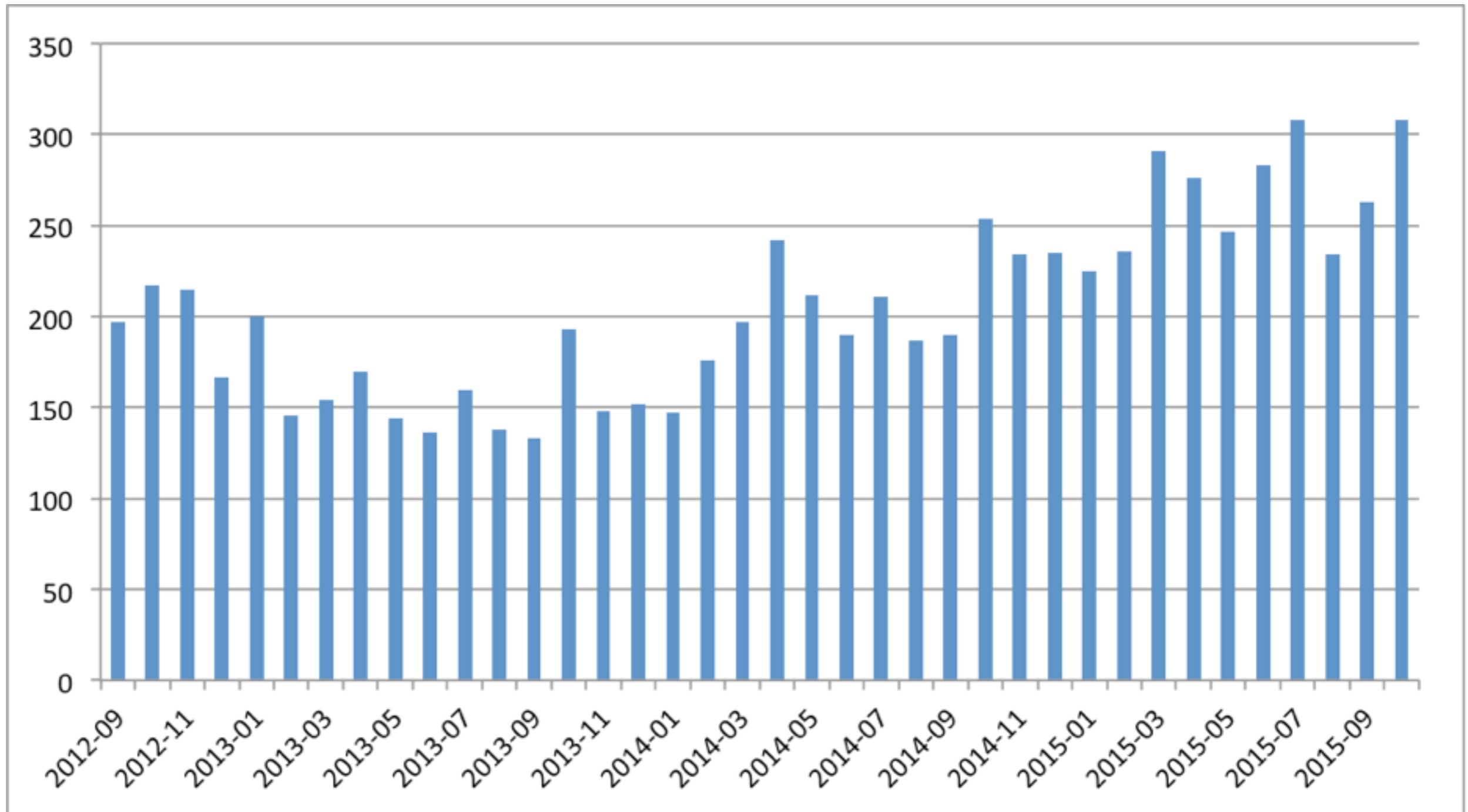
- We still have IPv4 addresses left — we have more than a /8 in the available pool
  - Every member can get 1,024 addresses (/22)
  - Block reserved for Internet Exchange Points, Temporary Assignments and Unforeseen circumstances

# 3 Years After Reaching the Last /8

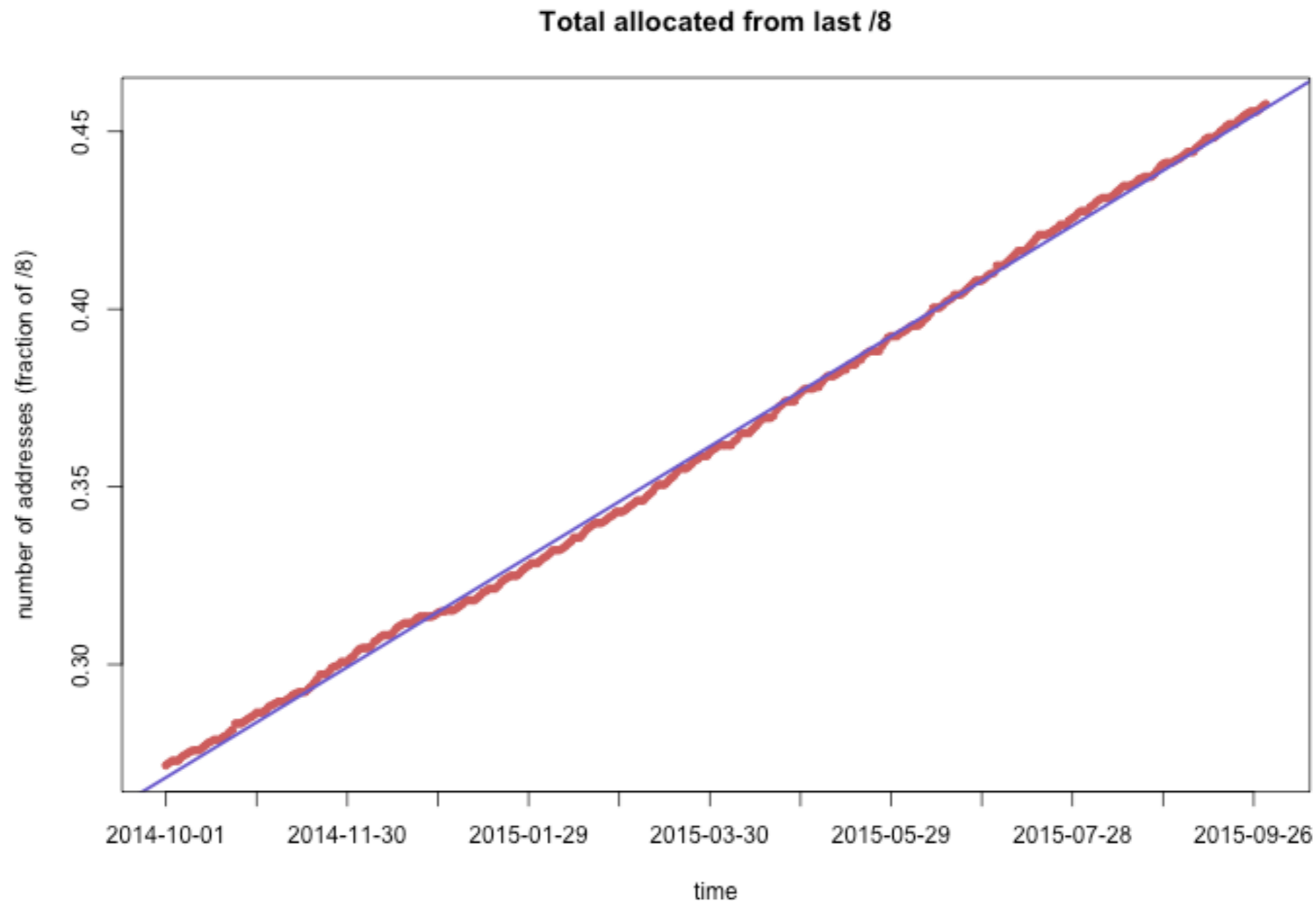


- <http://bit.ly/IPv43y8>

# Allocations from the last /8



# Future of IPv4 Pool



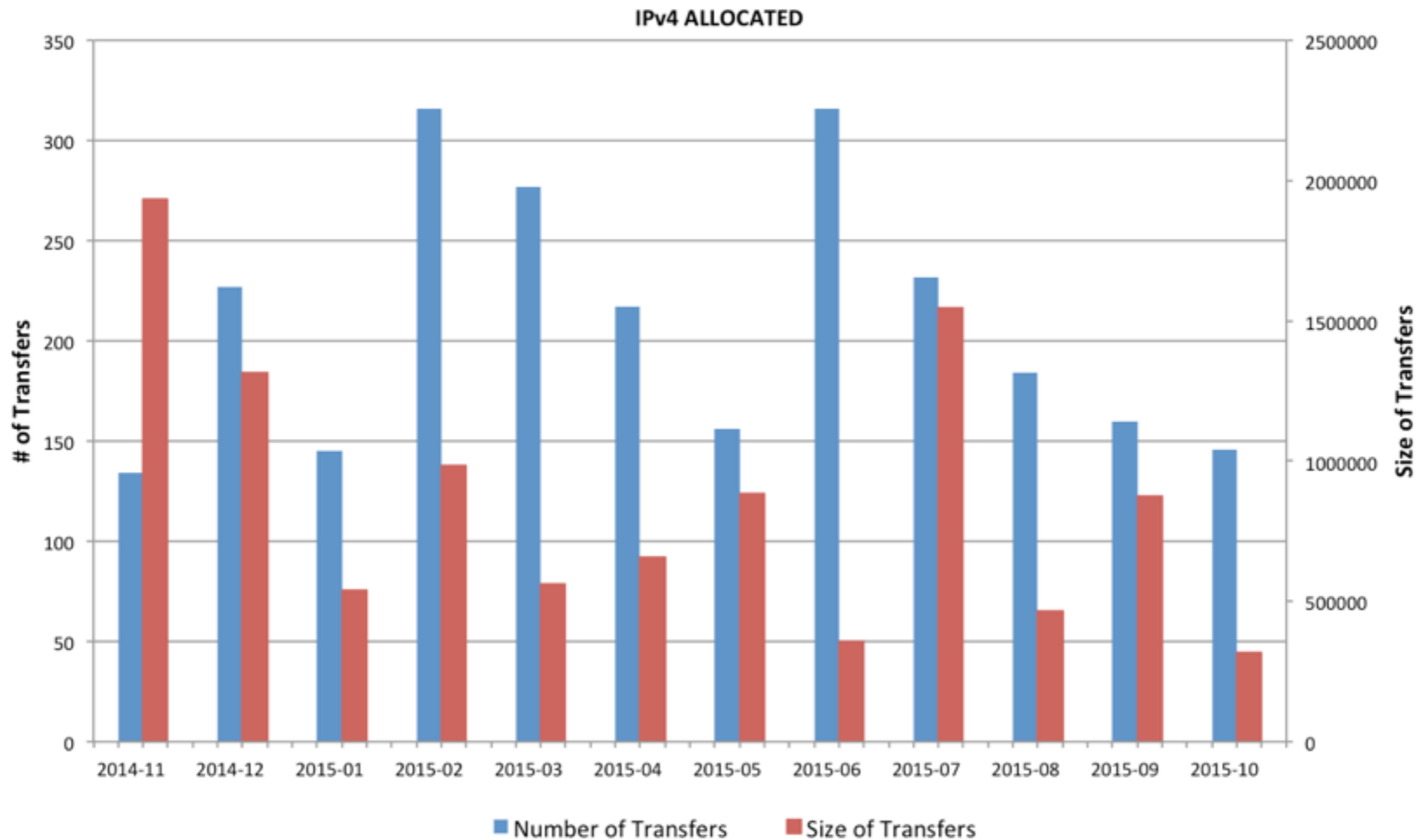
- Average of 8.5 /22s per day
- At this rate the IPv4 pool will last until January 2021

# Resource Transfers



- “Alignment of Transfer Requirements” policy change avoids LIR accounts being created solely to transfer /22 allocations
- RIPE NCC Executive Board resolution that at least one full year’s membership fee must be paid before an LIR account can close down
- RIPE NCC Executive Board resolution to suspend option to open multiple LIR accounts per legal entity to obtain multiple /22
  - To be voted upon at GM 2016

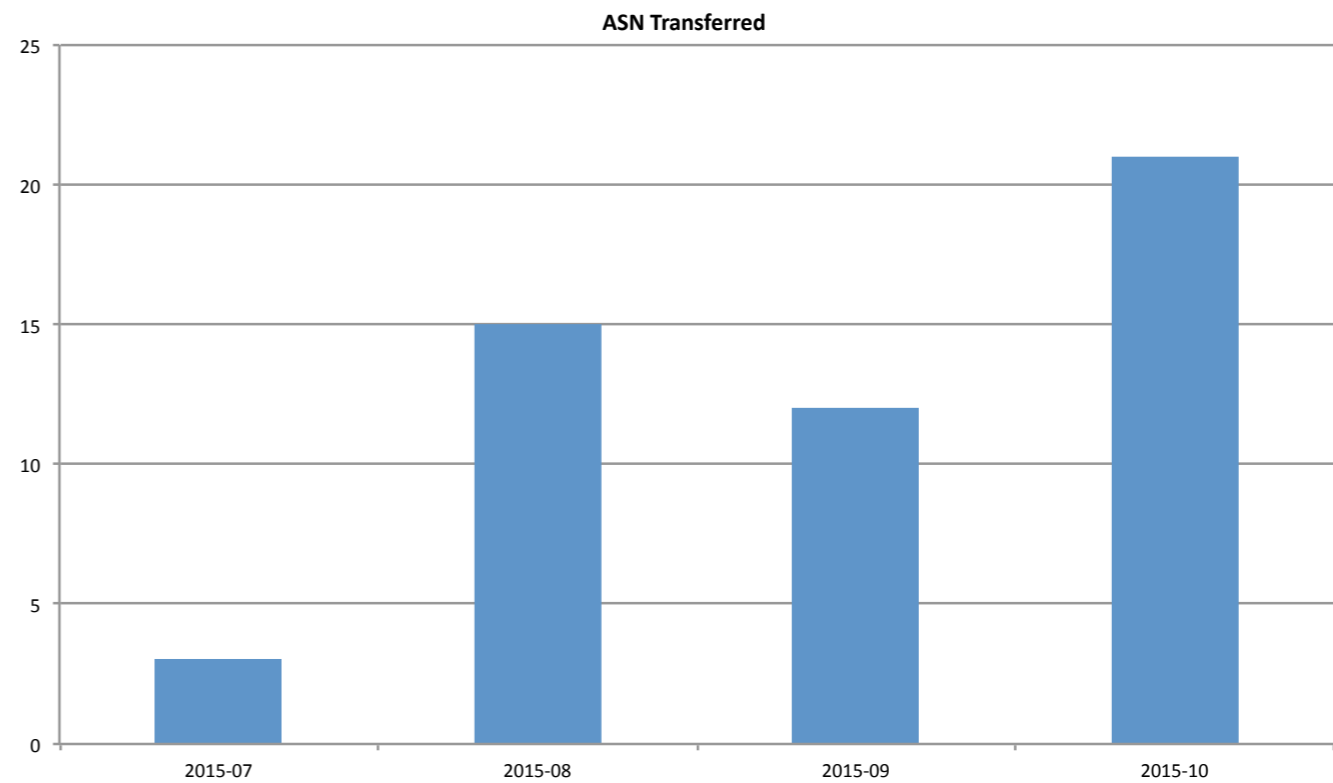
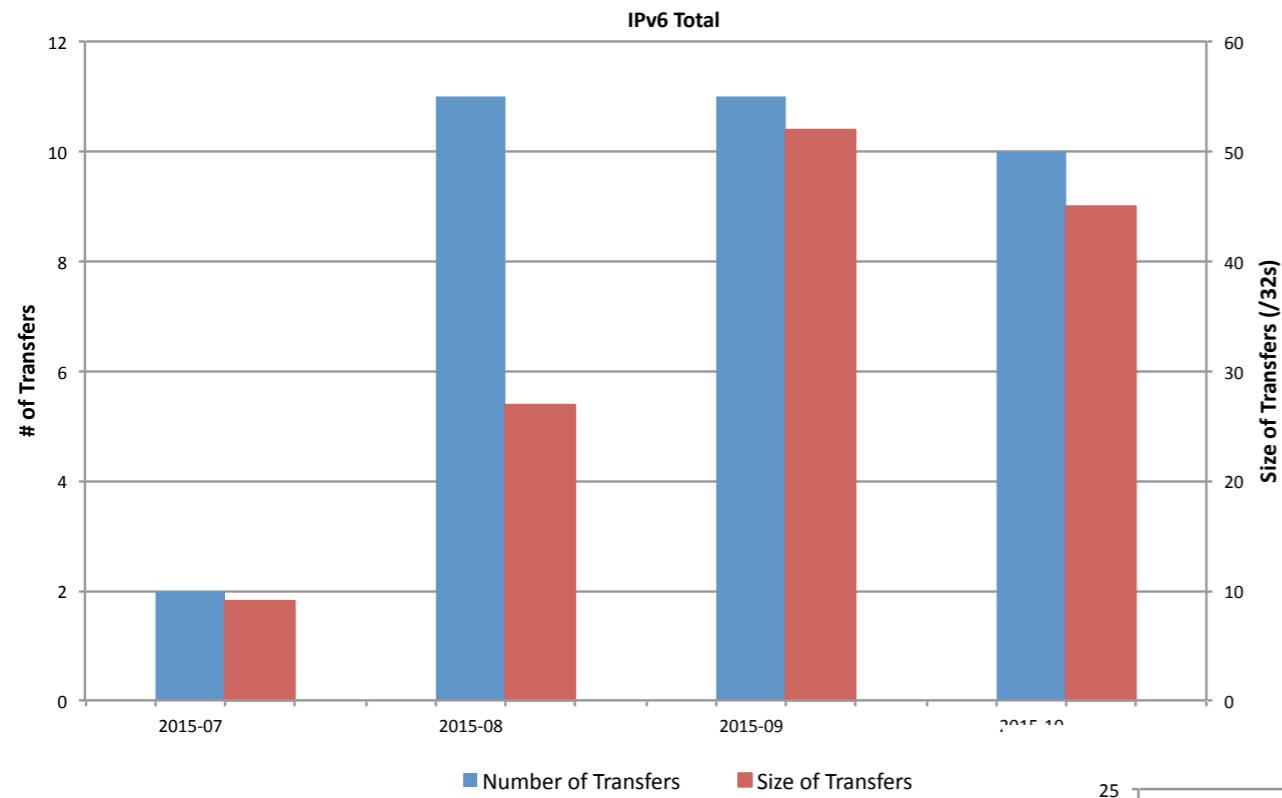
# IPv4 Allocation Transfers



**Number of IPv4 addresses transferred last month: 326,144**



# IPv6 and ASN Transfers

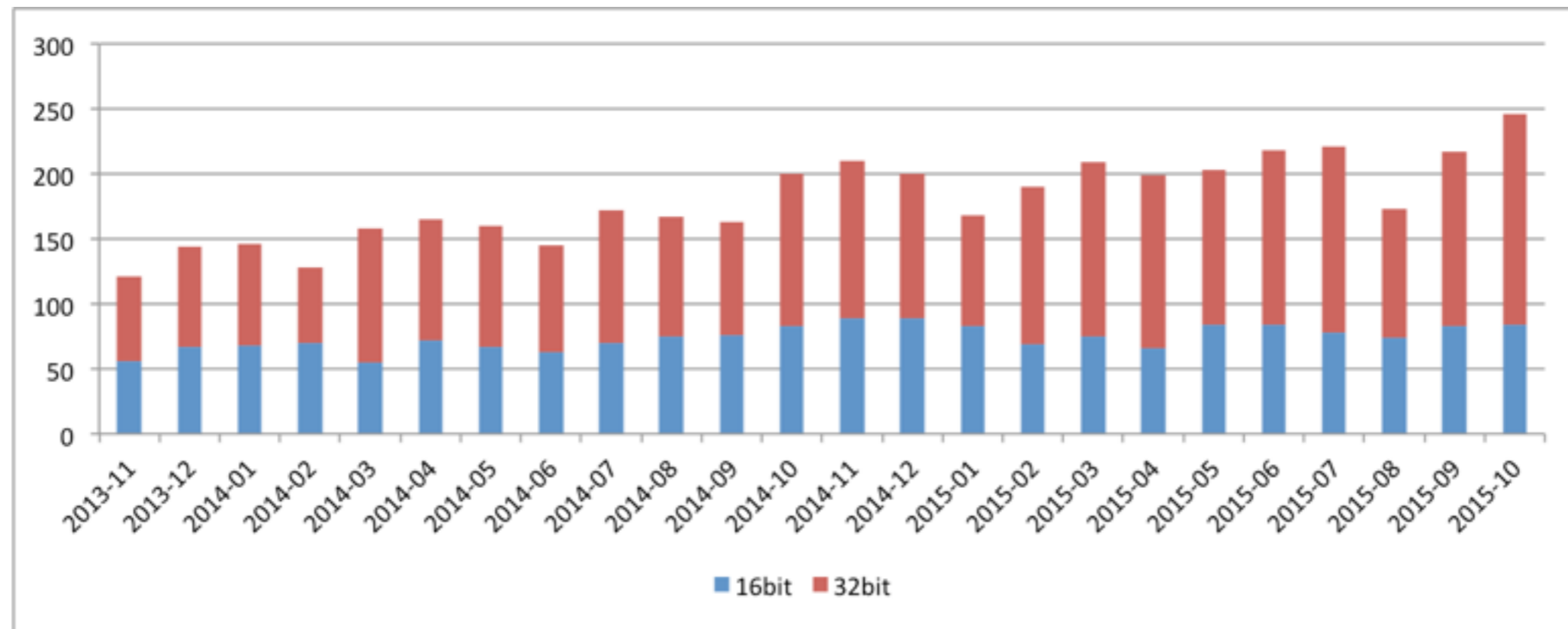


# IPv6 Status



- Over 75% of our members have IPv6 address space
- Providing technical hands-on IPv6 training courses
- Improving our online IPv6 training and webinars
- IPv6 Roadshows
- “Train the Trainer” initiative to equip local talent in the Middle East region to deliver IPv6 training
- Contributed to the IPv6 Best Practices Forum (BPF) for this year’s IGF

# ASN Status

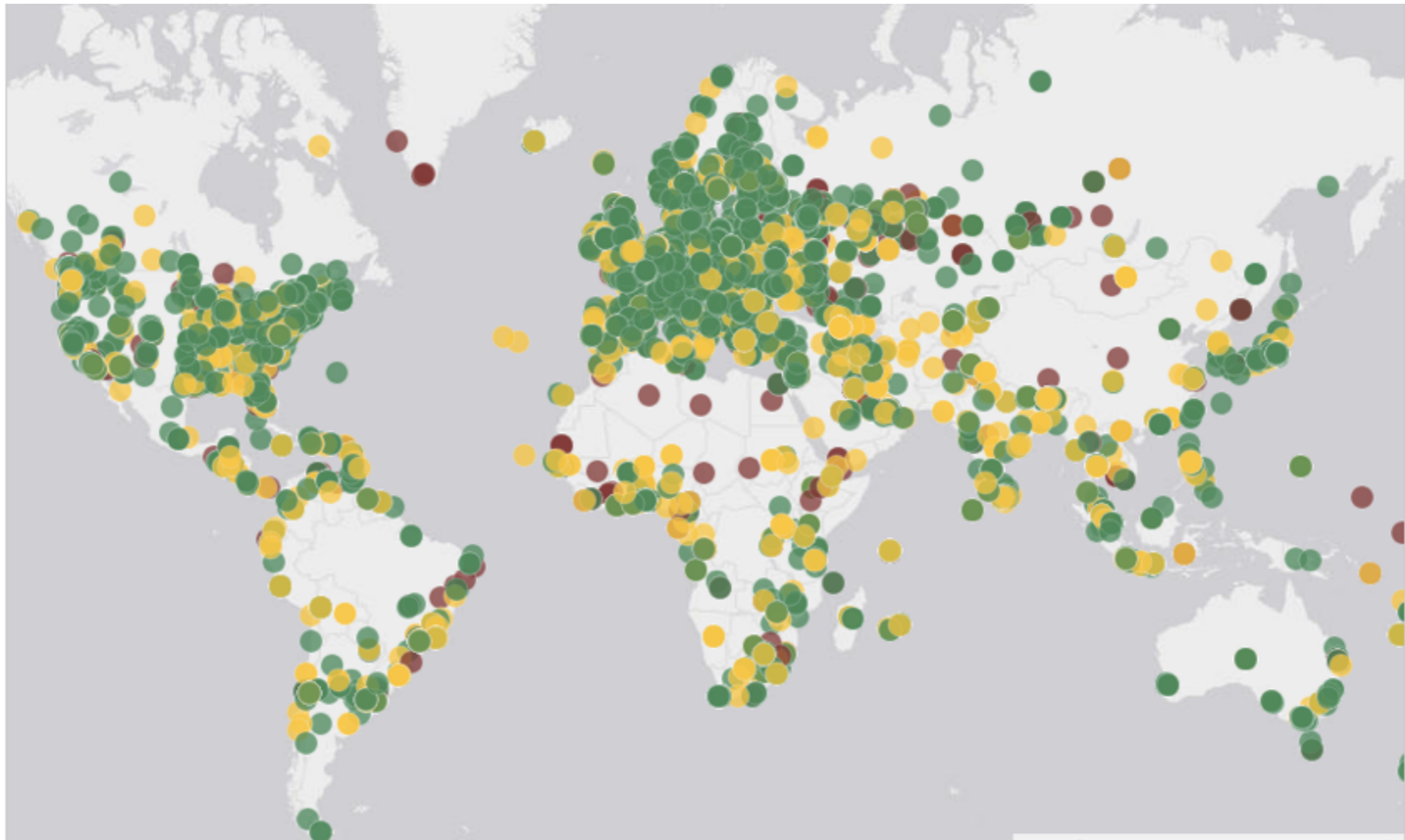


- We have assigned 32-bit ASNs by default since 2009
- ±2800 16bit ASNs.
- Will last ±36 months at current assignment rate

# RIPE Atlas



With your help we're building the largest Internet measurement network ever made.



# RIPE Atlas



- Currently at 9,124 connected probes and 159 RIPE Atlas anchors; aiming for 10,000 probes
- Being more selective about distribution — only looking for ASes that don't already have a probe
- Happy to have AfriNIC's help
- AfriNIC hosting 1 RIPE Atlas anchor
- Helping to distribute probes in your region
- Find out how others are using RIPE Atlas:
- <https://labs.ripe.net/atlas/user-experiences>

# RIPE Meetings



- Previous Meetings:
  - November 2015: RIPE71 Bucharest, Romania
  
- Upcoming Meetings:
  - May 2016: RIPE72 Copenhagen, Denmark
  - October 2016: RIPE73 Madrid, Spain



# Questions

[ingrid@ripe.net](mailto:ingrid@ripe.net)

