



2001:610:240:0 193.0.0.202 62.109.128 195.048.02.03 128.42.02.02 2001:610:240 193.0.0.203 195.048.02.03
62.109.128 195.048.02.03 2001:610:240 193.0.0.202 2001:610:240:0 193.0.0.203
193.0.0.203 2001:610:240:0 193.0.0.202 62.109.128 195.048.02.03 178.12.09.02 2001:610:240 193.0.0.203
2001:610:240:0 193.0.0.202 62.109.128 195.048.02.03 178.12.09.02 2001:610:240 193.0.0.203

Number Resource Organization



Internet Number Resource Status Report

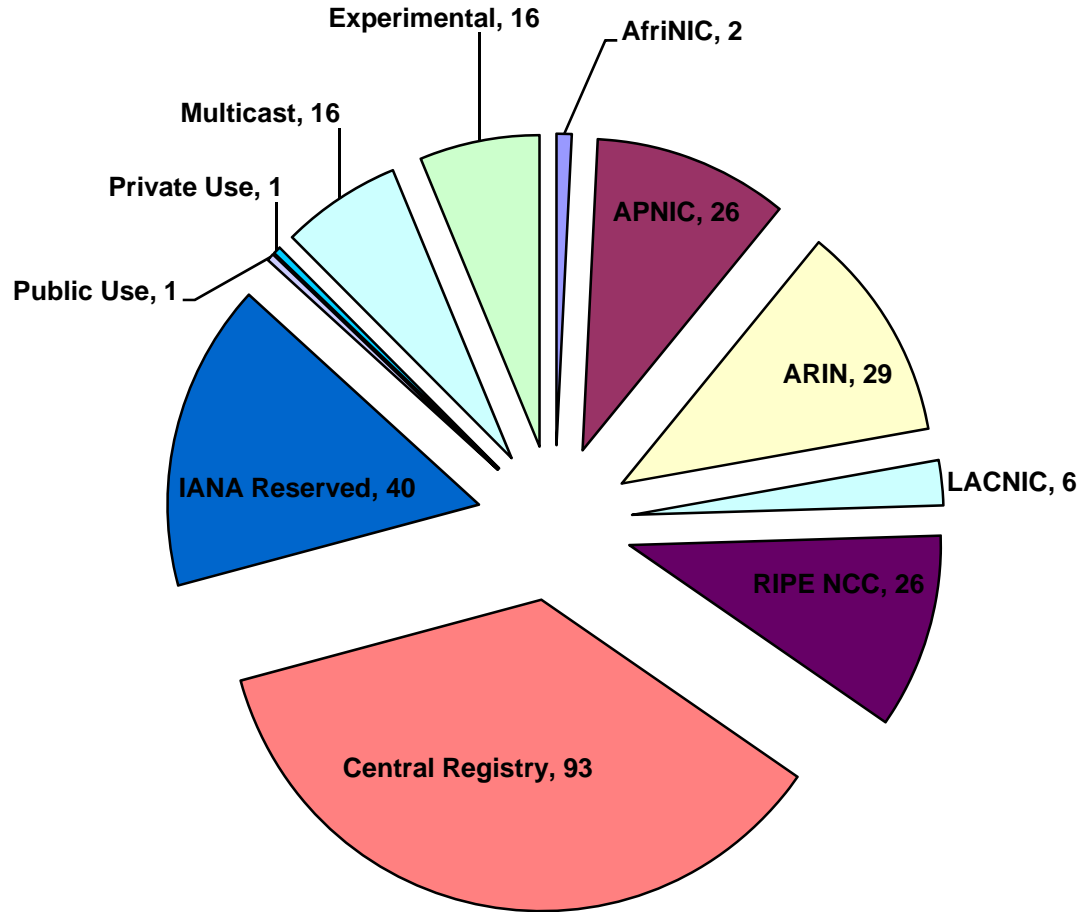
As of 31 Mar 2008

Prepared by
Regional Internet Registries
AfrINIC, APNIC, ARIN, LACNIC and the RIPE NCC

2001:610:240:0-193:0:0:202 62:109:128-195:048:02:03 178-12:02:02 2001:610:240 193:0:0:203
62:109:128-195:048:02:03 2001:610:240-193:0:0:202 62:109:128-195:048:02:03 178-12:02:02 2001:610:240 193:0:0:203
193:0:0:203 2001:610:240:0-193:0:0:202 62:109:128-195:048:02:03 178-12:02:02 2001:610:240 193:0:0:203
2001:610:240:0-193:0:0:202 62:109:128-195:048:02:03 178-12:02:02 2001:610:240 193:0:0:203
Number Resource Organization



Status of 256 /8s IPv4 Address Space

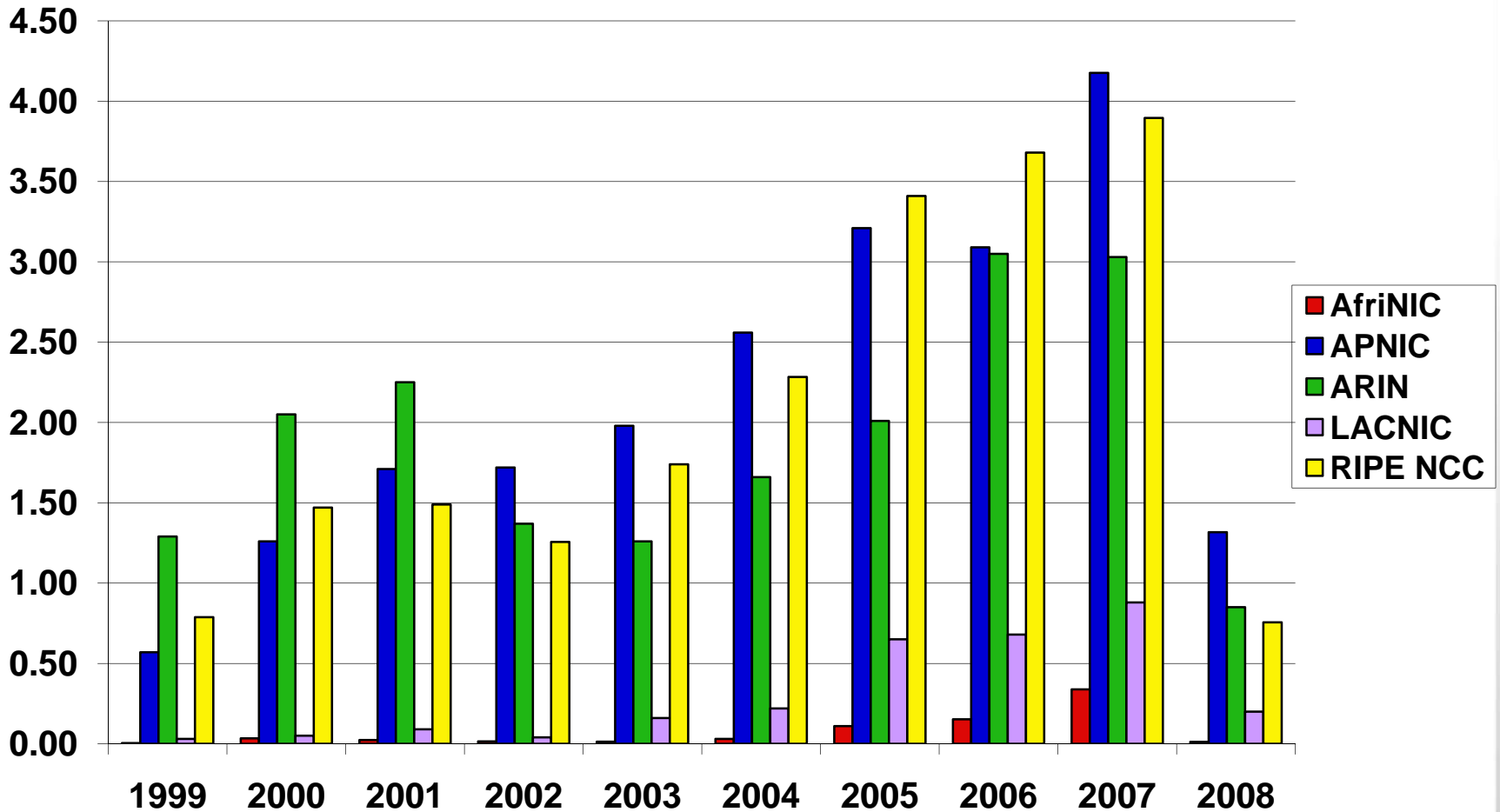


2001:610:240:0-193.0.0.202 62.109.128-195.048.02.03 178.42.02.02 2001:610:240 193.0.0.203
62.109.128-195.048.02.03 2001:610:240-193.0.0.202 62.109.128-195.048.02.03 178.42.02.02 2001:610:240 193.0.0.203
193.0.0.203 2001:610:240:0-193.0.0.202 62.109.128-195.048.02.03 178.42.02.02 2001:610:240 193.0.0.203
2001:610:240:0-193.0.0.202 62.109.128-195.048.02.03 178.42.02.02 2001:610:240 193.0.0.203
Number Resource Organization



IPv4 Allocations RIRs to LIRs/ISPs

Yearly Comparison

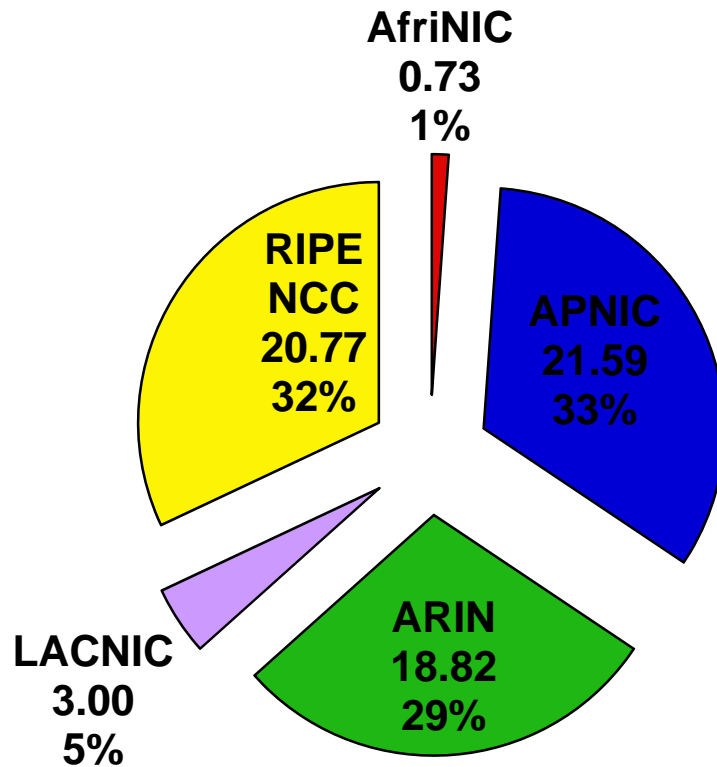


2001:610:240:0-193.0.0.202 62.109.128-195.048.02.03 178.12.02.02-2001:610:240 193.0.0.203
62.109.128-195.048.02.03 2001:610:240-193.0.0.202 62.109.128-195.048.02.03 178.12.02.02-2001:610:240 193.0.0.203
193.0.0.203 2001:610:240:0-193.0.0.202 62.109.128-195.048.02.03 178.12.02.02-2001:610:240 193.0.0.203
2001:610:240:0-193.0.0.202 62.109.128-195.048.02.03 178.12.02.02-2001:610:240 193.0.0.203
Number Resource Organization



IPv4 Allocations RIRs to LIRs/ISPs

Cumulative Total (Jan 1999 – Mar 2008)

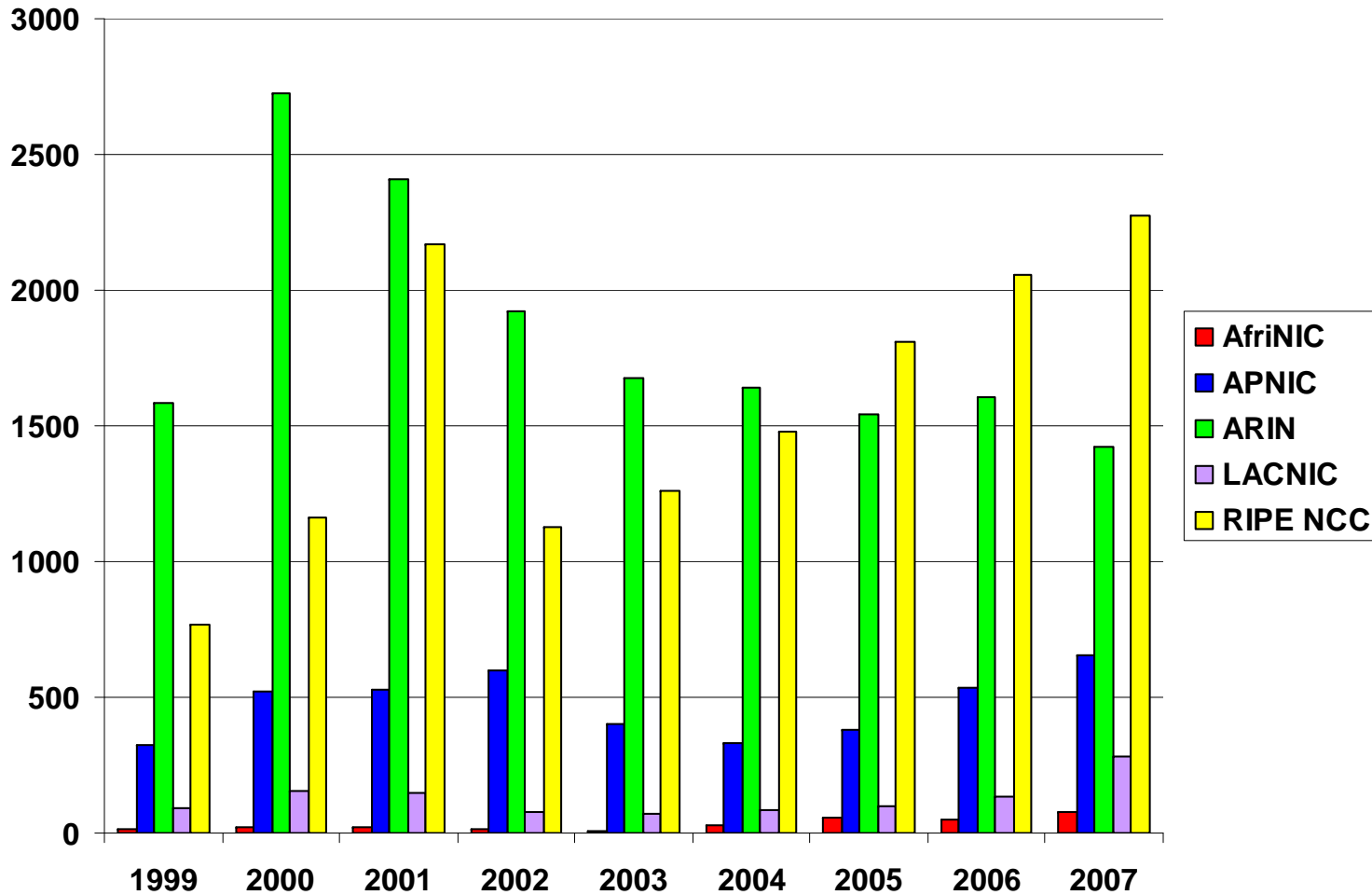


2001:610:240:0-193:0:0:202
62:109:128-195:048:02:03
193:0:0:203 2001:610:240:0-193:0:0:202
2001:610:240:0-193:0:0:202

Number Resource Organization



ASN Assignments RIRs to LIRs/ISPs Yearly Comparison

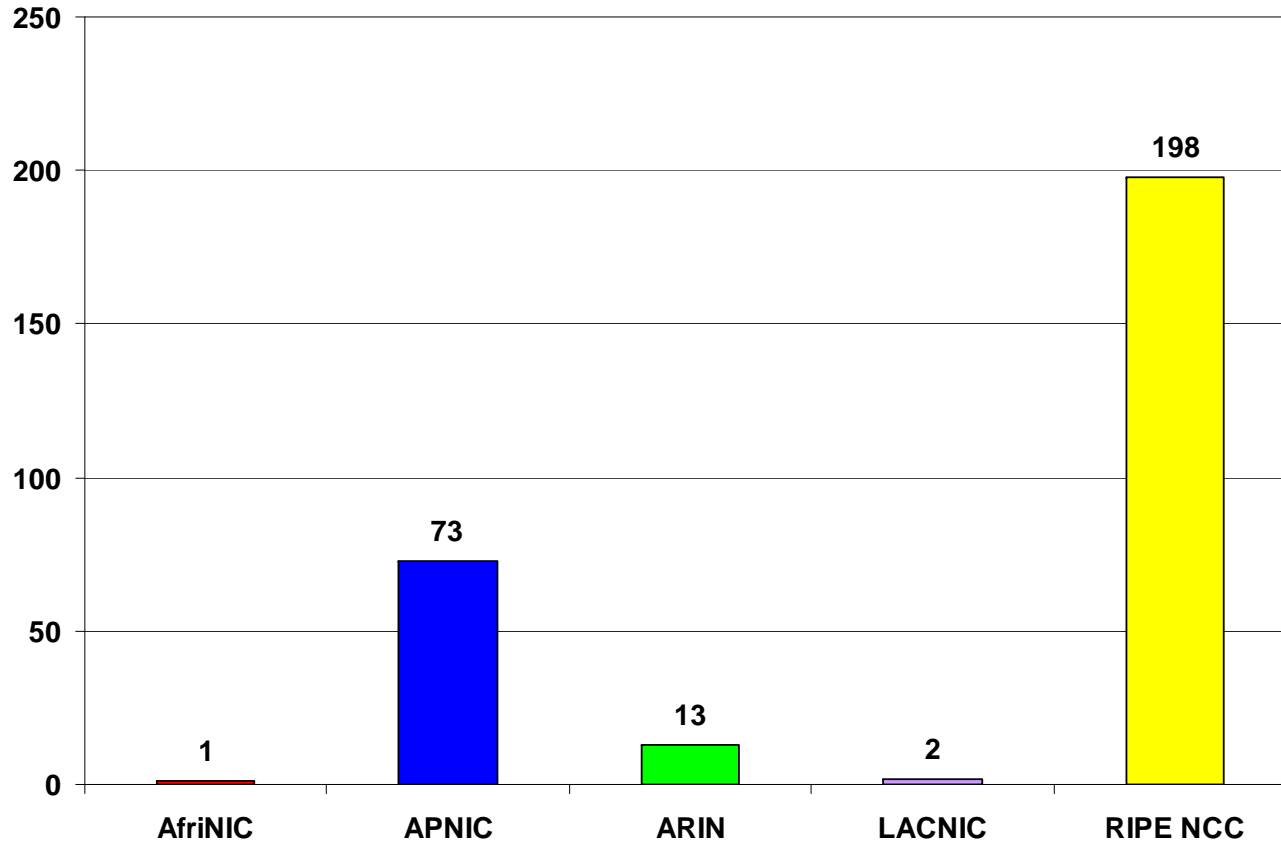


Number Resource Organization



IANA IPv6 Allocations to RIRs

issued as /23s prior to Oct 06



Number Resource Organization



IANA IPv6 Allocations to RIRs

issued Oct 06

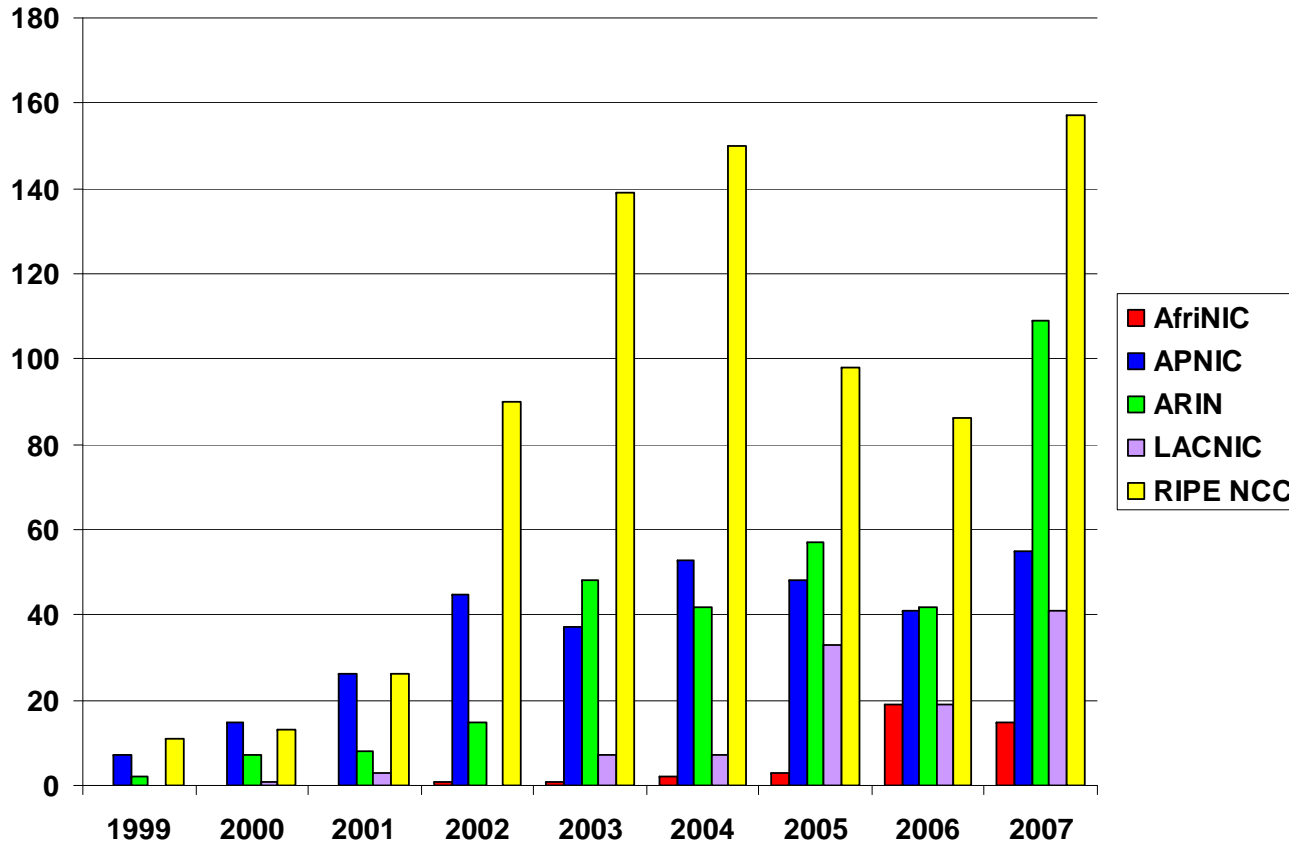
RIR	IPv6 Address
AfriNIC	2C00:0000::/12
APNIC	2400:0000::/12
ARIN	2600:0000::/12
LACNIC	2800:0000::/12
RIPE NCC	2A00:0000::/12

Some /23s from the previous slide are incorporated in these /12s

2001:610:240:0-193:0:0:202
62 109 128 195 048 02 03
193:0:0:203 2001:610:240:0-193:0:0:202
2001:610:240:0-193:0:0:202
62
Number Resource Organization



IPv6 Allocations RIRs to LIRs/ISPs Yearly Comparison

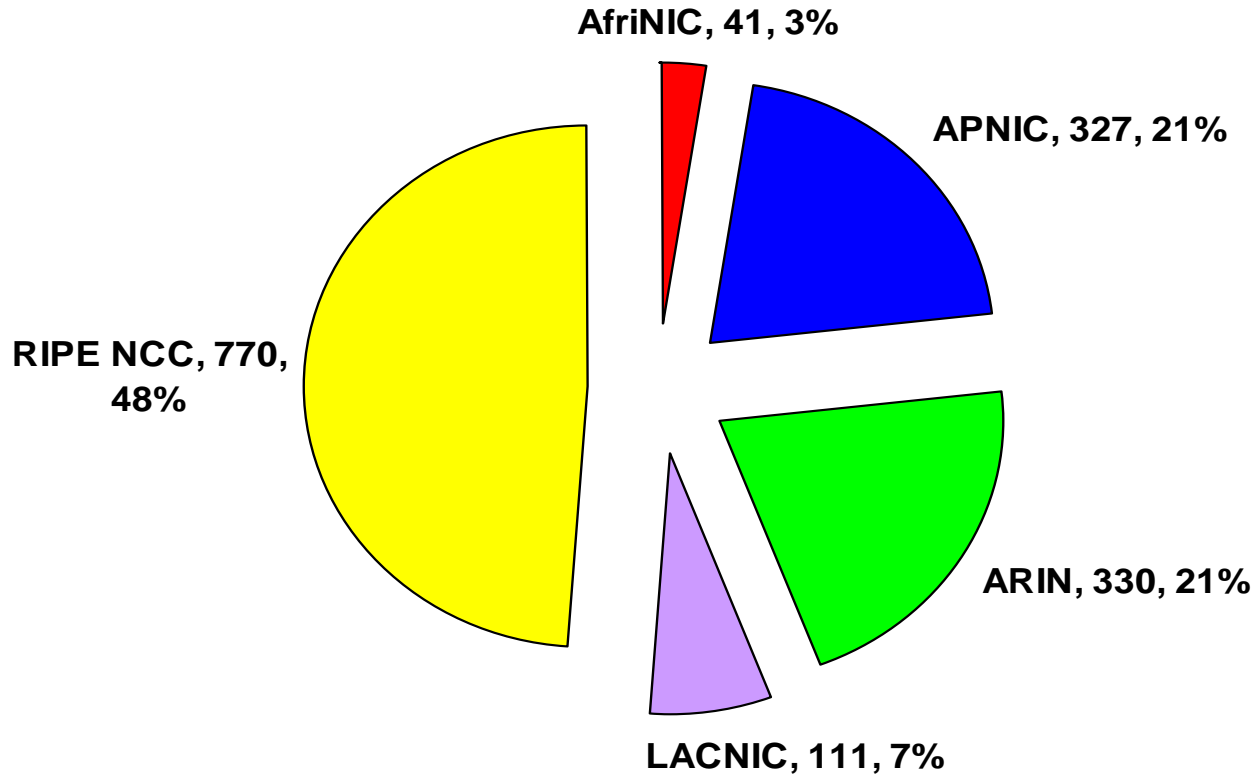


Number Resource Organization



IPv6 Allocations RIRs to LIRs/ISPs

Cumulative Total (Jan 1999 – Mar 2008)



2001:610:240:0
193.0.0.202
62 109 128
195 048 02 03
193.0.0.203
2001:610:240:0
193.0.0.202
2001:610:240:0
193.0.0.202
62
Number Resource Organization

Links to RIR Statistics

- RIR Stats:
www.nro.net/statistics

- Raw Data/Historical RIR Allocations:
www.aso.icann.org/stats
www.iana.org/assignments/ipv4-address-space
www.iana.org/assignments/as-numbers
www.iana.org/assignments/ipv6-unicast-address-assignments



NRO

THANK YOU!

2001-610-240-0 193.0.0.202 62 109 128 195 048 02 03 128 42 02 02 2001-610-240 193.0.0.203
62 109 128 195 048 02 03 193.0.0.203 2001-610-240-0 193.0.0.202 62 109 128 195 048 02 03 178 42 02 02 2001-610-240 193.0.0.203
2001-610-240-0 193.0.0.202 62 109 128 195 048 02 03 178 42 02 02 2001-610-240 193.0.0.203
2001-610-240-0 193.0.0.202 62 109 128 195 048 02 03 178 42 02 02 2001-610-240 193.0.0.203

Number Resource Organization