

Policy Development Process @LACNIC

Sofía Silva
LACNIC

What do we understand by “Policy”?



- **Criteria and rules in which Internet resource assignments are based.**
- **Requisites for Internet resources requests.**
- **Information required to LACNIC members about how the requested resources are, or will be, used.**

Why are you important?



- **The PDP is an open and public process.**
- **LACNIC believes in the importance of paying attention to the LAC community necessities.**
- **Once those criteria are established by our own community, they will reflect the realities and expectations of the community.**

What is the PDP about?

- It shows how to create and modify policy for the allocation and assignment of resources by LACNIC to its members.
- LACNIC's PDP is a bottom-up process.
- Discussion occurs in the Public Policy List: politicas@lacnic.net and in the Public Policy Forum.

Policy Forum Co-Chairs

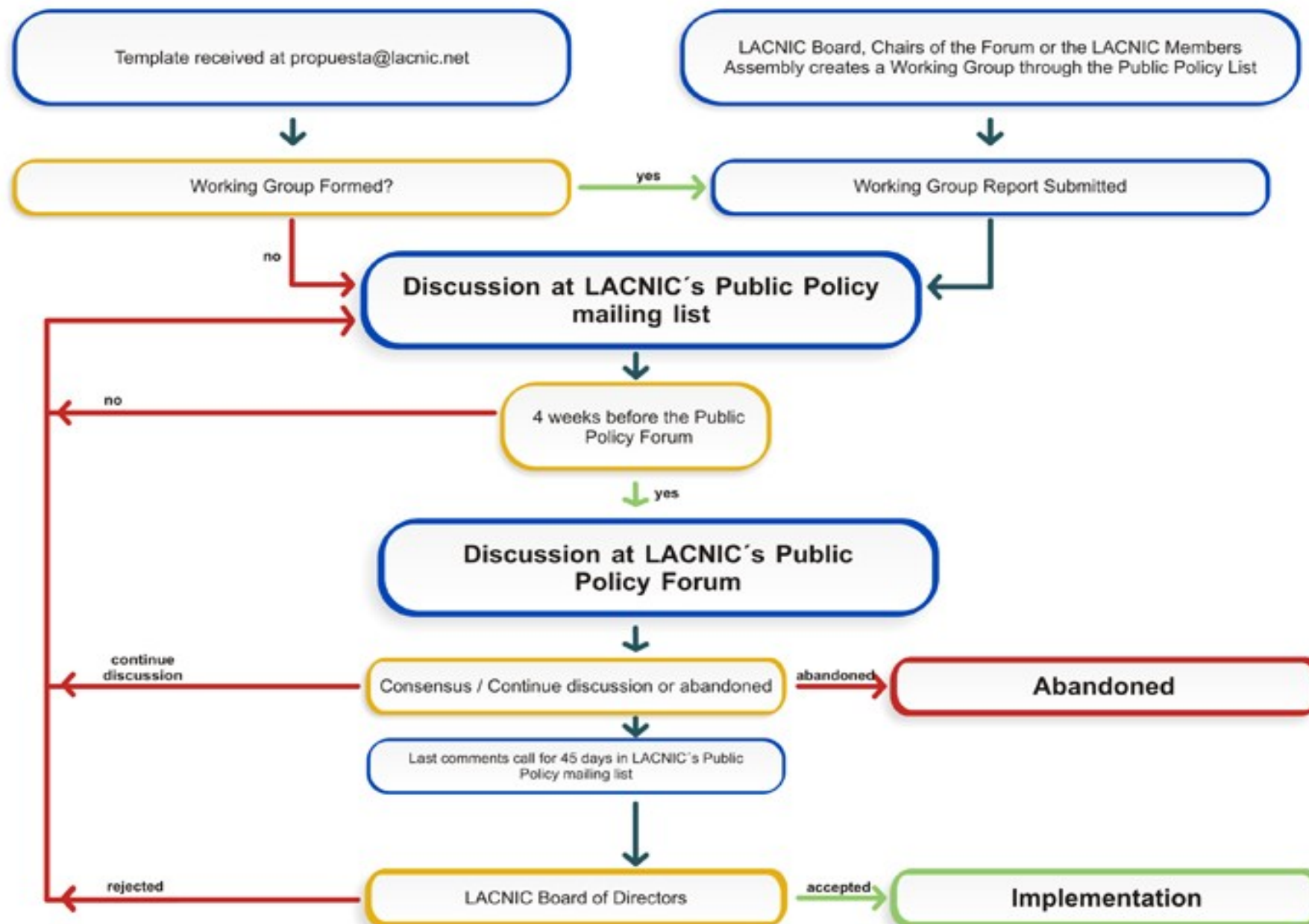
- **The PDP is monitored by two co-chairs.**
- **Anyone from the community can be elected co-chair.**
- **Elected alternately for a 2-year-term.**
- **Call for nominations is made through the PPML and through LACNIC's web page.**
- **The election is conducted using electronic mechanisms and it's ratified during the Public Forum.**

LACNIC Staff Role



- **Act as a secretariat for the realization of the process and the administration of the discussion list.**
- **Modify the Policy Manual and implement policy once approved.**
- **Provide the mechanisms for the election of the co-chairs.**
- **Staff cannot submit proposals or participate with views in the discussion process or in the consensus determination.**

PDP

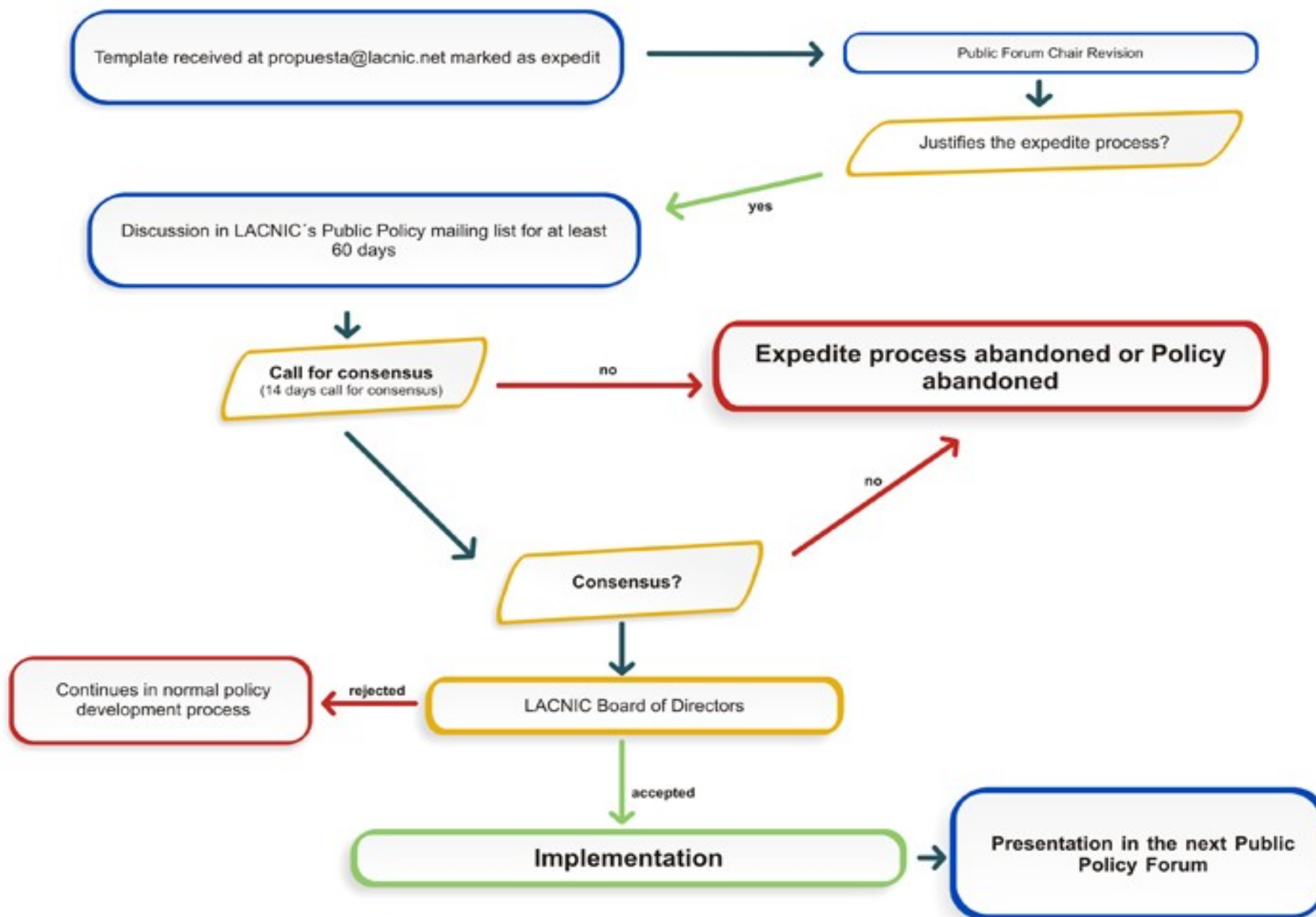


Expedited Process



- **These proposals don't need to be discussed at the Public Policy Forum to be approved.**
- **The proposal must be analyzed by both co-chairs, who must agree that said proposal justifies the expedited process.**
- **The proposal must be discussed for at least 60 days in the mailing list.**
- **To be approved, the proposal must reach consensus in the mailing list.**

Expedited Process



How can you participate?



- **Subscribe to LACNIC's Public Policy List politic@lacnic.net at:**
 - <https://mail.lacnic.net/mailman/listinfo/politic>
- **Participate in LACNIC's Public Policy Forum or in LACNIC's regional meetings. Remote participation is also possible.**
- **If you wish to submit a new proposal or modify an existent proposal, please complete the form available at:**
 - <http://lacnic.net/cgi-bin/formpolitic/en/formpolitic.cgi>



<http://lacnic.net/en/politicas/pdp.html>

**Or just go to www.lacnic.net and click on
Policies**

Thank you !

sofia@lacnic.net

are::you:IPv6:ready?